

POLICAR

miniature electric motor racing



slot CARS ACCESSORIES

1:32·SCALE



policar.it



Galileo Engineering

Progettazione elettronica

Galileo Engineering srl
via Cavallotti 16
42122 Reggio Emilia, Italy
Tel (+039) 0522 920496
Tel (+039) 0522 516244
Fax (+039) 0522 920496
E-mail: info@slot.it





INDEX

- 5 FORMULA 1 White kit
- 6 FORMULA 1 Spare Parts
- 9 LOTUS 72 Spare Parts
- 12 MARCH 701 Spare Parts
- 14 FORMULA 1 Wheels
- 16 330 P4 Spare Parts
- 18 312 PB Spare Parts
- 20 F40 Spare Parts
- 23 HOME RACERS Spare Parts
- 24 POLICAR TRACK



CHRIS AMON

STP

FORMULA 1 White kit (not assembled)



CAR02z Lotus 72 - White kit

5



CAR04z March 701 - White kit

FORMULA 1 Spare Parts



PCH01 F1 narrow motor mount



PCH03 F1 wide motor mount

6



F1 assembled narrow motor mount

PCH01as-45z16	axle 45mm, z16 gear
PCH01as-45z17	axle 45mm, z17 gear
PCH01as-45z18	axle 45mm, z18 gear
PCH01as-51z16	axle 51mm, z16 gear
PCH01as-51z17	axle 51mm, z17 gear
PCH01as-51z18	axle 51mm, z18 gear

FORMULA 1 Spare Parts



F1 assembled wide motor mount

- PCH03as-45z16** axle 45mm, z16 gear
 - PCH03as-45z17** axle 45mm, z17 gear
 - PCH03as-45z18** axle 45mm, z18 gear
 - PCH03as-51z16** axle 51mm, z16 gear
 - PCH03as-51z17** axle 51mm, z17 gear
 - PCH03as-51z18** axle 51mm, z18 gear
-



PMX01 F1 DFV-25K RPM
motor dual open/closed case sides

PGI2516-PI F1 plastic inline crown
with axle and spacer, Z25/Z16



PPI429o15 F1 9 teeth pinion,
external \varnothing :4.2 mm
internal \varnothing :1.5 mm, brass (2x)



PPA01 Set of 4 bushings
for F1 motor mounts



PPA02 Stopper
with M2xL2 mm hexagonal screw



FORMULA 1 Spare Parts

PCH04 Motor mount screws
M1.4 x 2.5 mm, 4pcs.



PCH05 Metric screws
M2 x 3.8 mm, brass, 5pcs.



PCH06 Metric screws
M2 x 7 mm, brass, 5pcs.



PCH07 Metric screws
M2 x 5 mm, brass, 5pcs.



8



PGS8016 F1 16 teeth brass gear with 51 mm axle

PGS8017 F1 17 teeth brass gear with 51 mm axle

PGS8018 F1 18 teeth brass gear with 51 mm axle

POLICAR

www.policar.it

POLICAR

www.policar.it

P-Banner-W

P-Banner-B

LOTUS 72 Spare Parts



PCS02t Lotus 72 chassis



PCS02b1 Lotus 72 body (type A)



PCS02b2 Lotus 72 body (type B)



PCS02i Lotus 72 wheels inserts (2x + 2x)

LOTUS 72 Spare Parts

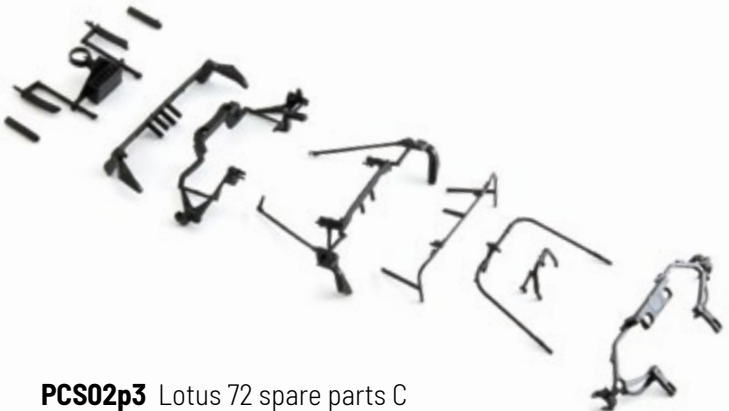


PCS02p1 Lotus 72 spare parts A

10



PCS02p2 Lotus 72 spare parts B



PCS02p3 Lotus 72 spare parts C

LOTUS 72 Spare Parts



PCS02v Lotus 72 transparent parts



MARCH 701 Spare Parts



PCS04t March 701 chassis

12



PCS04i March 701 wheel inserts (2x + 2x)

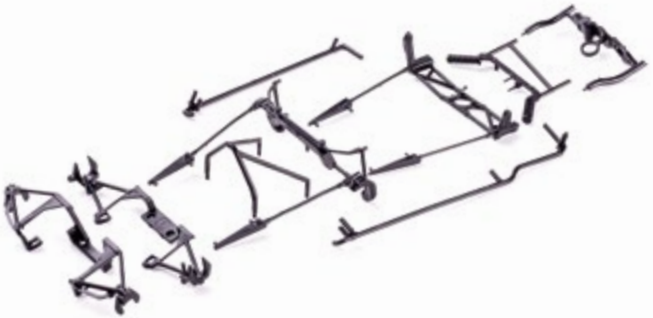


PCS04b March 701 body

MARCH 701 Spare Parts



PCS04p1 March 701 spare parts A



PCS04p2 March 701 spare parts B



PCS04v March 701 trasparent parts

FORMULA 1

Wheels

PPT1219C1

C1 compound,
F1 rear tyre for D.16 wheels (4x)



PPT1219F22

F22 compound,
F1 rear tyre, slick, for D.16 wheels (4x)



PPT1310C1

14 C1 compound,
F1 rear tyre, slick, for D.16 wheels (4x)



PPT1220C1

C1 compound,
F1 front tyre for D.13.8 wheels (4x)



PPT1354C1

C1 compound,
F1 front tyre, slick, for D.13.8 wheels (4x)



PPT1224C1

C1 compound,
F1 rear tyre, slick, for D.13.8 wheels (4x)



FORMULA 1

Wheels



PW16011724P ex PWH1217-PI
PI Ø 16 x 11.7 F1 rear wheels, 0.8g (4x)



PW13813519P
PI Ø 13.8 x 13.5 F1 rear wheels, 0.5g (4x)



PW13810504P
PI Ø 13.8 x 10.5 F1 front wheels, 0.5g (4x)



PW13807921P ex PWH1218-PI
PI Ø 13.8 x 7.9 F1 front wheels, 0.5g (4x)



PW13813519A
Al Ø 13.8 x 13.5 F1 rear wheels, M2 grub, 1.8g (2x)



PW16011724A ex PWH1234-Al
Al Ø 16 x 11.7 F1 rear wheels, M2 grub, 1.8g (2x)

330 P4 Spare Parts



PCS06b 330 P4 body kit



16

PCS06i 330 P4 kit wheel inserts and spare parts



PCS06t 330 P4 chassis

330 P4 Spare Parts



PCS06v 330 P4 transparent parts



PCS06lx 330 P4 Polycarbonate cockpit



312 PB

Spare Parts



KIT01

312 PB body kit

18



PCS01t

312 PB EV06 chassis



PCS01p

312 PB tearproof parts

312 PB

Spare Parts



PCS01v

312 PB transparent part



19

PCS01i

312 PB wheel inserts (2x + 2x)



F40 Spare Parts



PCS03b

F40 body kit



PCS03t

F40 EV06 chassis

20



PCS03p

F40 tearproof parts



PCS03v

F40 transparent part

F40 Spare Parts



PCS03cp

F40 plastic cockpit



PCS03cl

F40 polycarbonate cockpit

21



PCS03i

F40 wheel inserts





Neu
interesse

GT 06/BRZ

17

Legend 3
夢見

GAZOO Racing

Neu interesse



YOKOHAMA

PMU
RACING

HOME RACERS

Spare Parts



HR01

Pickup set for Home Racers car



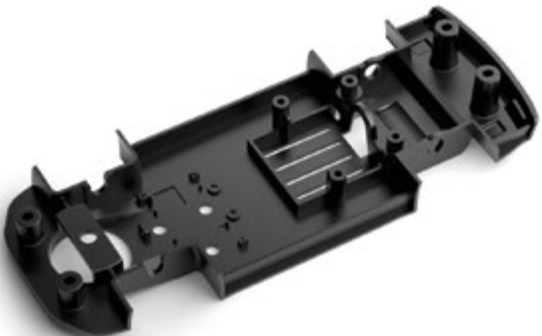
HR02

Copper braids for Home Racers car (4x)



HR03

GT86 spare chassis



HR04

WRX STI spare chassis

POLICAR

Track

miniature electric motor racing



POLICAR, the brand that was synonym of slot car racing in Italy in the 60's, returns with innovative solutions for a completely new track system. POLICAR's new design and ideas bring back the fun and excitement of slot car racing! Lanes are set apart by 9 cm, the ideal lane spacing for 1/32 racing, and the surface texture is good for rubber and sponge tyres alike. The 6 cm extra wide borders slide securely into the side of the track, and the guardrails are kept firmly in place. Bridges and ramps are easy and stable. Rails are made of stainless steel.



POLICAR TRACK

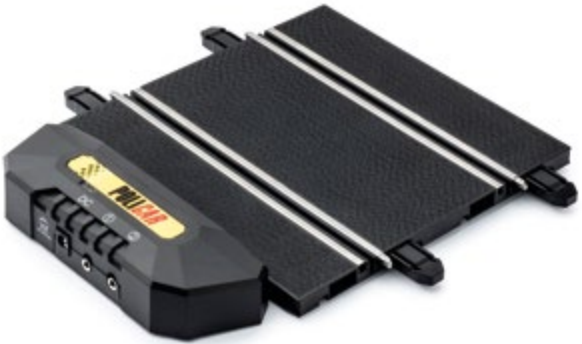
Racing Track System



P008-4

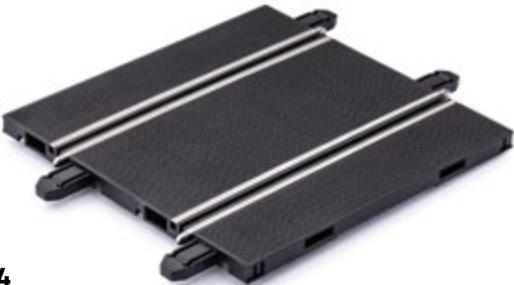
Full length straight, 358mm (4x)

26



P012-1

Analog powerbase (1x)



P023-4

Half length straight, 179mm (4x)

POLICAR TRACK

Racing Track System



P002-6

Straight border, 179mm (6x)



P006-2

Ninco adapter, 179mm (2x)



P007-4

Spare clips for Ninco adapter (4x)



POLICAR TRACK

Racing Track System



P009-4
R1 45° Curve (4x)



P051-6
Inner border for R1 curve
12.5° (6x)



P053-6
Inner border for R1 curve
22.5° (6x)

29



P014-2
R2 45° Curve (2x)



P052-6
Outer border for R2 curve
22.5° (6x)



P054-6
Outer border for R2 curve
22.5° (6x)

POLICAR TRACK

Racing Track System



P044-2
R3 22.5° Curve (2x)



P055-6
Inner border for R3 curve
22.5° (6x)



P056-6
Outer border for R3 curve
22.5° (6x)



P045-2
R4 22.5° Curve (2x)



P057-6
Inner border for R4 curve
22.5° (6x)



P058-6
Outer border for R4 curve
12.5° (6x)



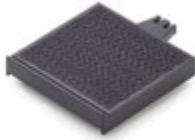
POLICAR TRACK

Racing Track System



P024-4

61.4 length straight, 61.4mm (4x)



P061-6

61.4 straight border, 61.4mm (6x)



P046-2

Polistil & Fleischmann
adapter, 61.4mm (2x)



P076-20

Intersection
locking clips (20x)

POLICAR TRACK

Racing Track System



P059-6
End border left (6x)



P060-6
End border right (6x)

33



P074-10
Locking clips for straights (10x)



P075-10
Locking clips for curves (10x)

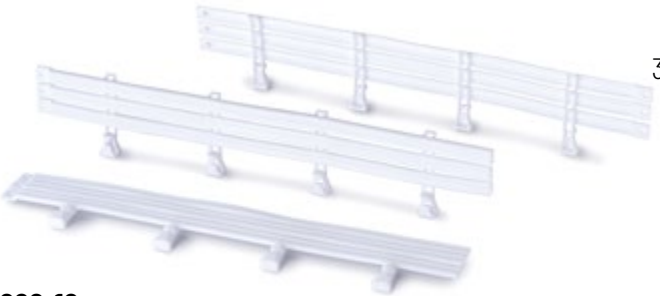


POLICAR TRACK

Racing Track System



P073-6
1m Barrier and clips set (6x)



P020-10
Guardrail 25cm (10x)

35



P010-4
Bridge set (4x)

POLICAR TRACK

Racing Track System



P003EU-1

5-13.5V adjustable
power supply - EU



P003UK-1

5-13.5V adjustable
power supply - UK



P003US-1

5-13.5V adjustable
power supply - US



P003AU-1

12V power supply - AU

POLICAR TRACK

Racing Track System



P028-1
Red controller (1x)



P029-1
Black controller (1x)

37



P018-1
Banana to 3.5mm stereo jack adapter



P019-1
Polarity inversion cable

POLICAR TRACK

Racing Track System



T001a-UK

Subaru BRZ drift track - UK version

T001a-AU

Subaru BRZ drift track - AU version

T001a-US

Subaru BRZ drift track - US version

POLICAR TRACK

Racing Track System



T002z-UK

6.5m starter set - UK version

T002z-AU

6.5m starter set - AU version

T002z-US

6.5m starter set - USA version
